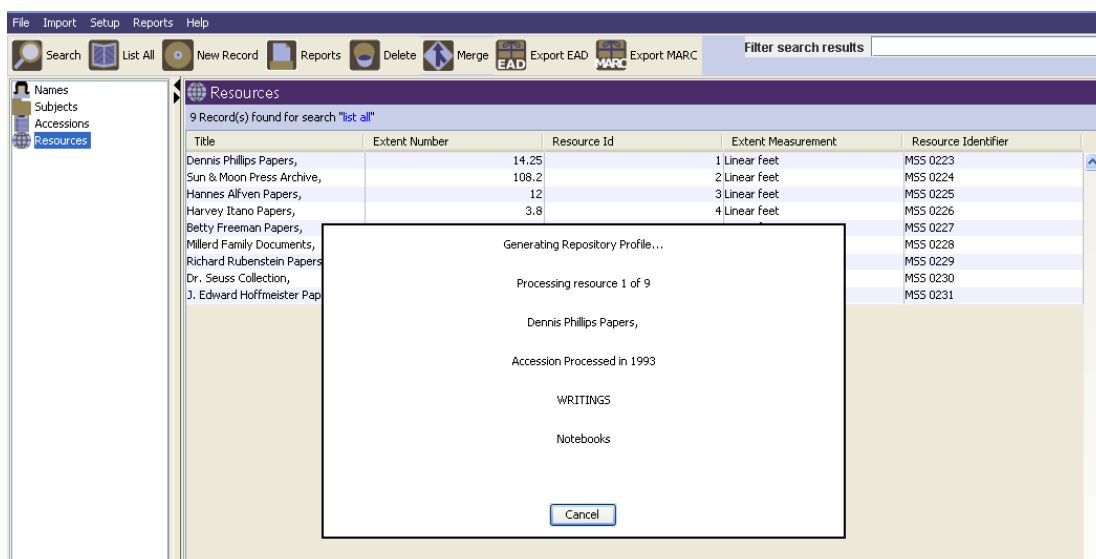




## New Features & Improvements for AT 1.5.9 (Maintenance Release)

- **Cancel button for progress screen**

A cancel button has now been implemented in progress dialogs for tasks that are known to take a long time, e.g. deleting a large number of records, printing finding aids, generating repository profile, importing batch EADs etc.

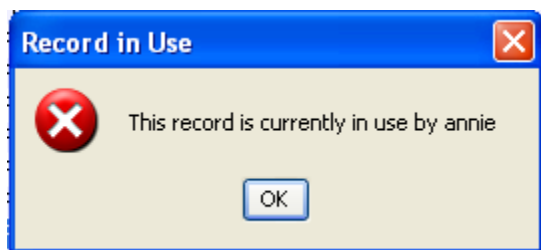


- **New process and message for cancelling from a record**

When using either the cancel button or the window close function (x), users are asked if they want to save record only if the record has been modified. If record has not been modified, the record is closed with no message.

- **Record locking**

When a second user attempts to access a record that is already opened, s/he will receive a message that the record is already in use. Access is denied and the Record in Use message, 'This record is currently in use by [username]' is displayed.



- **Analog instance container entry screen**

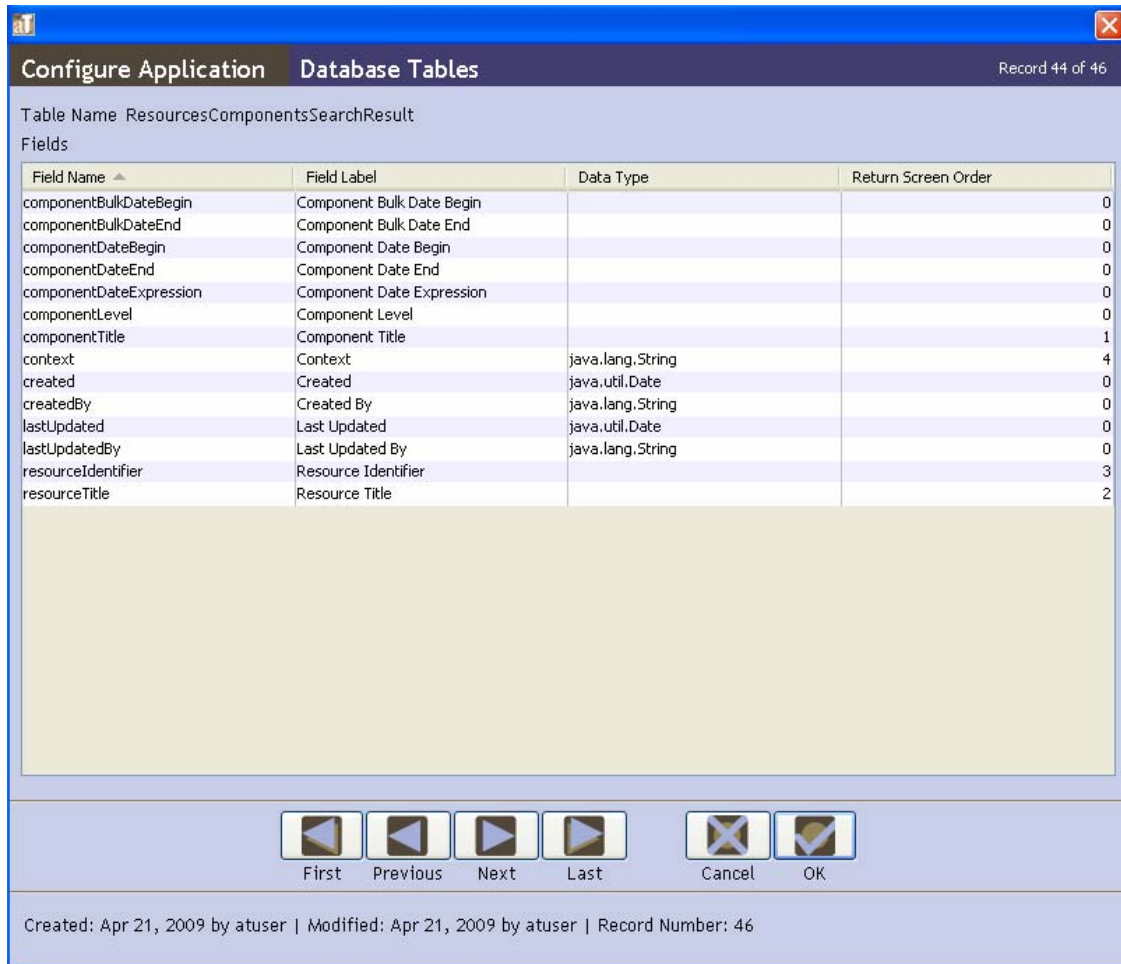
For an analog instance of a resource, there was the option to enter both a Container1Numeric Indicator and a Container1Alpha Numeric Indicator (for all three containers). Now there is only one field for both alphanumeric and numeric, thus users are not able to enter contradictory multiple values.

- **EAD names and subject output order should match order listed in AT**

Names and Subjects are now output in the EAD in the same order as they are listed in the Toolkit.

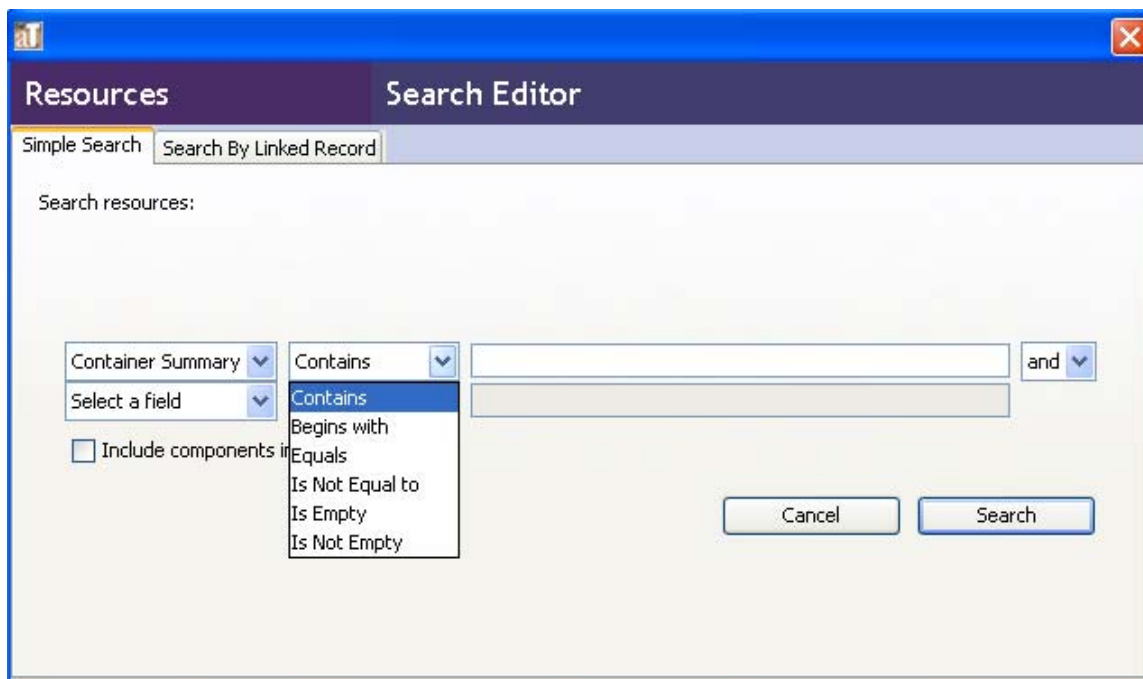
- **Capability to customize search result display when searching resource components**

Search results can now be customized when using component searches to facilitate browsing search results. Users can customize search results list screen using Configure Application (under the Setup menu) → ResourcesComponentsSearchResults table to edit the Return Screen Order.

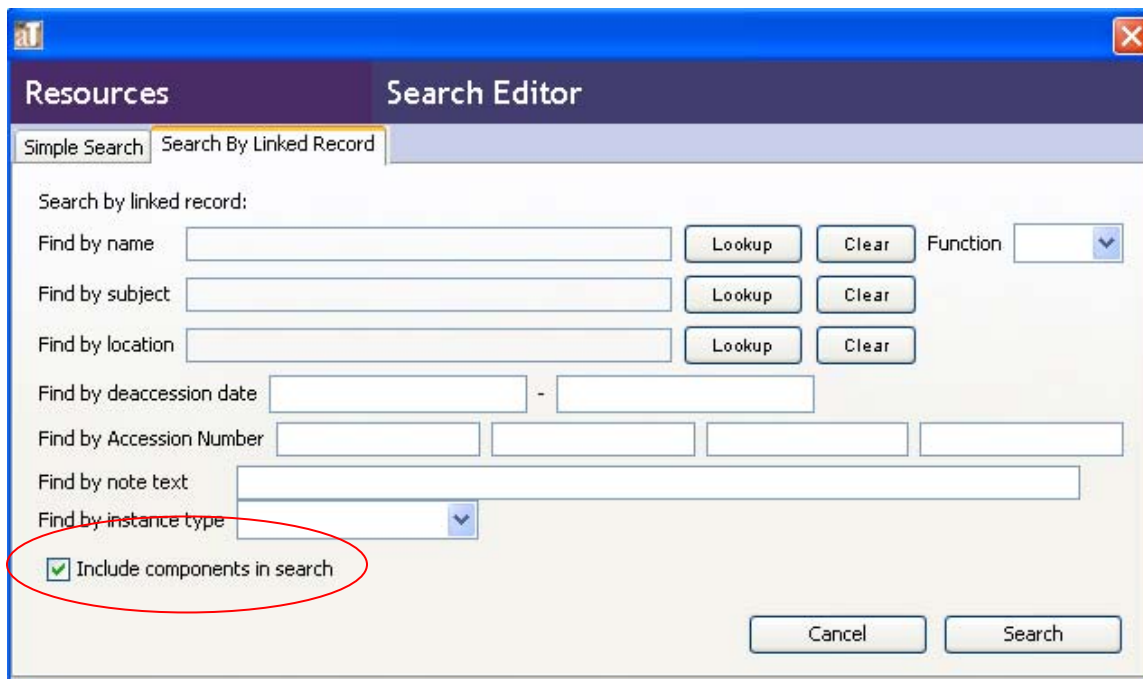


- **Search List order changed to display 'Contains' as the first choice**

Lookup List order in the search editor now displays "Contains" as the first choice, a move that has been recommended by many users and the usability consultant.

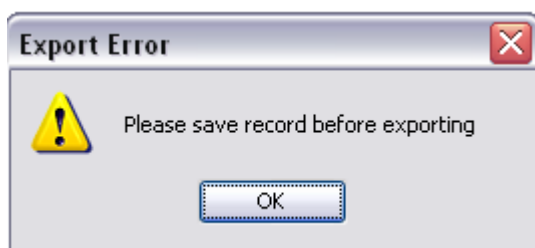


- **“Include components in search” box in the Search Editor checked by default**



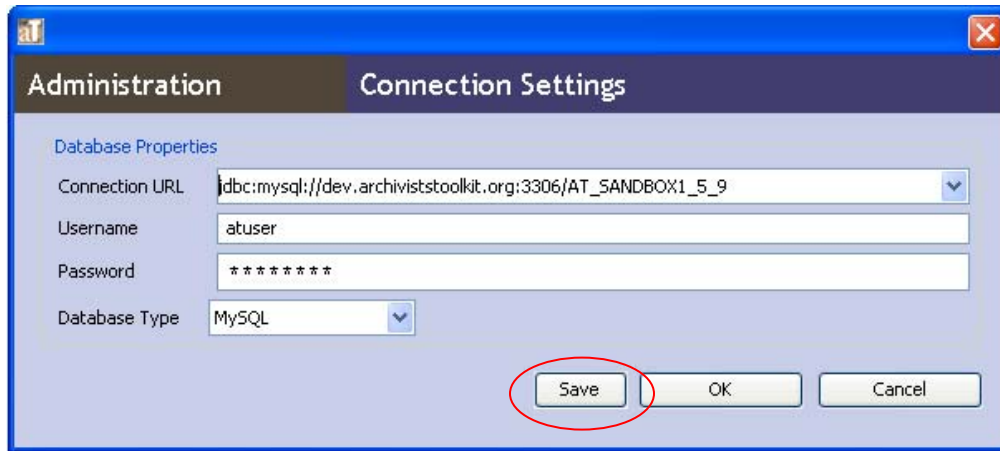
- **DO: Testing METS export**

When attempting to export METS file before saving the Digital Object, a message will appear.



- **Enable users to setup and use multiple database profiles within the AT**

Frequently users will work with multiple databases. Now it is possible to save different connection information, including url, username, password and database type. By saving the connection settings, the user does not need to reenter all the information when changing databases.



Enter the database properties and click on the 'save' button. When the connection settings window is opened again, the drop-down menu will display all Connection URLs that have been previously saved.

